

TOWER CRANE

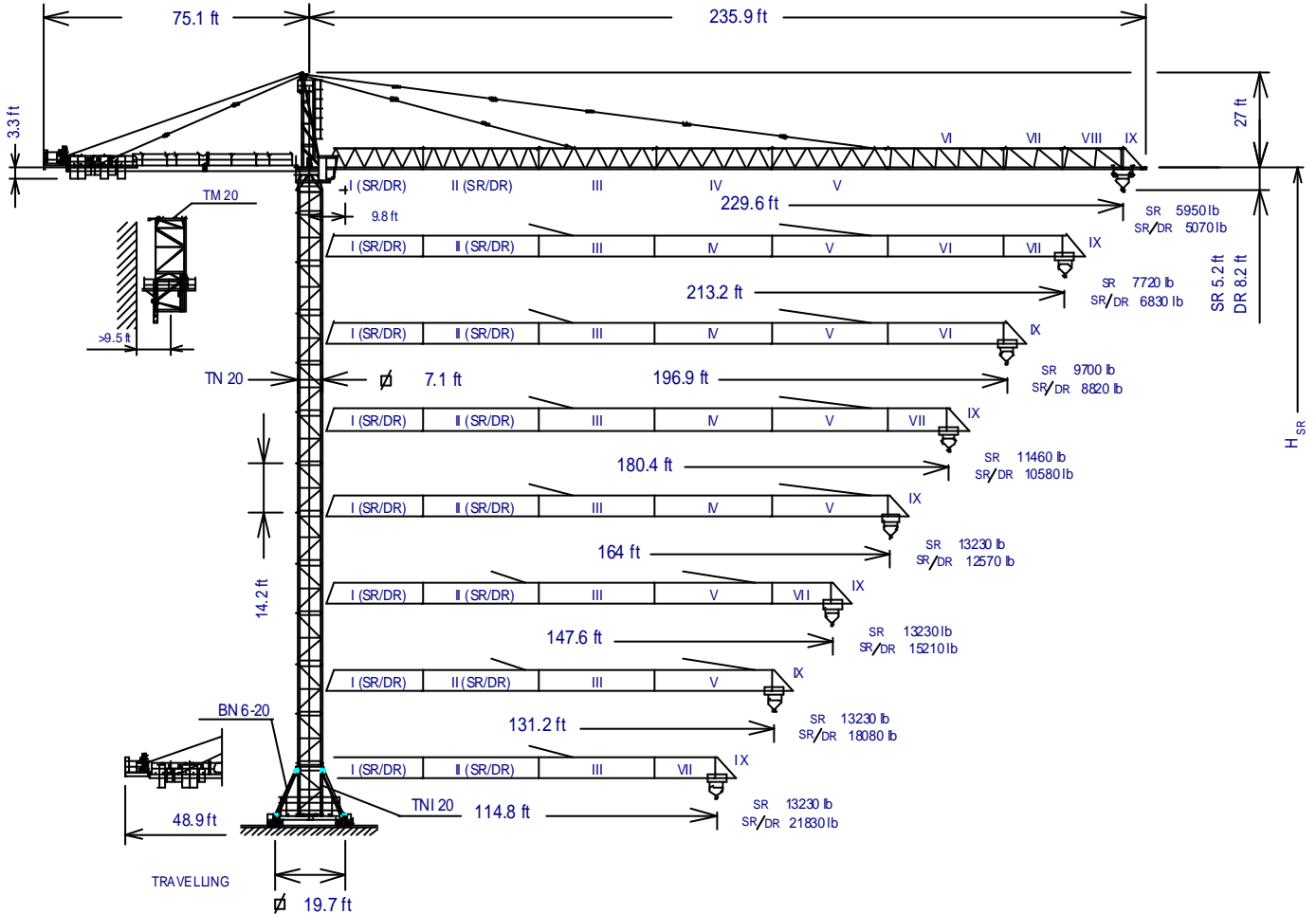
J2601

According to UNE 58-101-92
FEM 1001-87

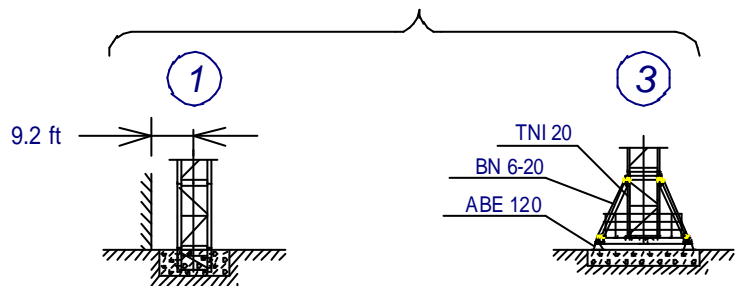
Sound power level directives
84/534/CEE & 87/405/CEE
Machinery directives
89/392/CEE & 91/368/CEE

ENGLISH TOP LINE SERIES

QUALITY ASSURANCE SYSTEM CERTIFIED ACCORDING TO
UNE-EN-ISO 9001



STATIONARY



$H_{SR} = 181.1\text{ft} \dots\dots\dots 163.7\text{ft} \dots\dots\dots 179.8\text{ft}$

$H_{DR} = H_{SR} - 0.9$	TN 20 ----- 136.31.000	BN 6-20 ----- 200.20.000
$H_{SR} = \text{Maximum height under hook without fastening (ft)}$	TNI 20 ----- 200.30.500	ABE 120 ----- 142.23.000
	TM 20 ----- 142.35.000	





JASO EQUIPOS DE OBRAS, S.A.

Date: 04-07-01 - Subject to modification, without previous warning


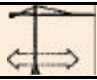
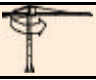
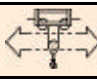



LOADS

J 2601

		Maximum loads SR – 13230							13230 lb at ... (ft)	
JIB	SR (lb)	Hook reach (ft)								
		229.6	213.2	196.9	180.4	164	147.6	131.2	114.8	
229.6 ft	5950	6500	7220	7990	8930	10140	11570	13230	13230	116.5
213.2 ft	————	7720	8490	9430	10470	11850	13230	13230	13230	133.7
196.8 ft	————	————	9700	10750	11960	13230	13230	13230	13230	149.8
180.4 ft	————	————	————	11460	12790	13230	13230	13230	13230	158.9
164 ft	————	————	————	————	13230	13230	13230	13230	13230	164
147.6 ft	————	————	————	————	————	13230	13230	13230	13230	147.6
131.2 ft	————	————	————	————	————	————	13230	13230	13230	131.2
114.8 ft	————	————	————	————	————	————	————	13230	13230	114.8

		Maximum loads SR/DR – 13230/26460										13230/26460 lb at ... (ft)	
JIB	SR / DR (lb)	Hook reach (ft)											
		229.6	213.2	196.9	180.4	164	147.6	131.2	114.8	98.4	82	65.6	
229.6 ft	5070	5620	6340	7110	8050	9260	10690	12570	13230 /15050	13230 /18570	13230 /23810	13230 /26460	110 /59.6
213.2 ft	————	6830	7610	8540	9590	10970	12620	13230 /14770	13230 /17640	13230 /21660	13230 /26460	13230 /26460	126.1 /68.4
196.8 ft	————	————	8820	9870	11080	12570	13230 /14440	13230 /16870	13230 /20060	13230 /24580	13230 /26460	13230 /26460	141.4 /76.6
180.4 ft	————	————	————	10580	11910	13230 /13450	13230 /15430	13230 /18020	13230 /21440	13230 /26180	13230 /26460	13230 /26460	149.9 /81.3
164 ft	————	————	————	————	12570	13230 /14220	13230 /16310	13230 /19020	13230 /22540	13230 /26460	13230 /26460	13230 /26460	157.1 /85.1
147.6 ft	————	————	————	————	————	13230 /15210	13230 /17420	13230 /20230	13230 /24030	13230 /26460	13230 /26460	13230 /26460	147.6 /90.1
131.2 ft	————	————	————	————	————	————	13230 /18080	13230 /21000	13230 /24910	13230 /26460	13230 /26460	13230 /26460	131.2 /93.2
114.8 ft	————	————	————	————	————	————	————	13230 /21830	13230 /25850	13230 /26460	13230 /26460	13230 /26460	114.8 /96.4

MECHANISMS FEATURES

MECHANISMS	*optional							
	EJ6070VFG		* EJ100120VF		TGJ2020VF	OR2207VF	TCM7105VF	TH2006
KW	44		73.5		2 x 7.3	3 x 5.5	5.5	15
SPEEDS	SR 4630 lb 7720 lb 13230 lb	0...59/59...118/118...230 ft/min 0...59/59...118/118...170 ft/min 0...59/59...118 ft/min	SR 4190 lb 6830 lb 13230 lb	0...23/23...98/98...196/196...294/294...392 ft/min 0...23/23...98/98...196/196...294 ft/min 0...23/23...98/98...196 ft/min	0...66 ft/min	0...0.2 0.2...0.35 0.35...0.7 sl/min	<u>13230 lb</u> 0...344 ft/min <u>26460 lb</u> 0...171 ft/min	2 ft/min
	DR 9260 lb 15430 lb 26460 lb	0...30/30...59/59...115 ft/min 0...30/30...59/59...85 ft/min 0...30/30...59 ft/min	DR 8380 lb 13670 lb 26460 lb	0...11/11...49/49...98/98...148/148...196 ft/min 0...11/11...49/49...98/98...148 ft/min 0...11/11...49/49...98 ft/min				
Maximum hook course	SR 518 ft 1135 ft	3 layers 6 max. layers	SR 610 ft 1056 ft	3 layers 5 max. layers		380/415V 50Hz	Power required with ... EJ 6070 VFG = 80.6 kW EJ 100120 VF = 110.1 kW	
	DR 259 ft 568 ft	3 layers 6 max. layers	DR 305 ft 528 ft	3 layers 5 max. layers		440V 60Hz	Powers and speeds: 20% more	

LOWER BALLASTS

Height under hook (ft)		For intermediate heights take the ballast corresponding to the higher height		
		181.1	138.6	92.8
Number of ballast blocks to put	Blocks of 13230 lb	12	10	8



JASO EQUIPOS DE OBRAS, S.A.

Date: 04-07-01 - Subject to modification, without previous warning

PACKING LIST

J 2601

DENOMINATION		L (ft)	A (ft)	H (ft)	P / W (lb)
Lower tower	TNI 20	14.68	8.21	8.21	7297
Tower	TN 20	14.68	7.22	7.48	5963
	TR 20	15	7.09	7.42	7822
	TR 20 A	14.67	7.09	7.42	7725
Slewing table, tower head base and slewing mechanism		16.69	7.79	8.3	16292
Tower head		26.89	4.62	5.99	6221
Slewing table assembly, tower head and slewing mechanism		39.84	10	8.14	23693
Jib section	I - SR	28.58	5.5	6.54	3915
	I - DR	28.58	5.5	6.54	4171
Jib section	II - SR	33.43	5.25	6.66	3997
	II - DR	33.43	5.25	6.66	4504
	III	33.43	5.25	6.69	4469
	IV	33.43	5.25	6.22	3591
	V	33.43	5.25	6.53	3258
Jib section	VI	33.43	5.25	6.22	2793
Jib section	VII	17.39	5.25	6.22	1570
	VIII	17.39	5.25	6.22	1305
Jib end		7.1	5.25	7.22	772
Hook assembly	SR	3.53	1.06	3.03	650
	DR	3.96	1.25	6.52	1274
Jib support tie	2 ties	19.75	2	2.14	4885
	2 ties	19.75	1.97	1.7	3904
	1 tie	19.75	2	1.09	1874
Crab	SR	5.79	7.88	5.15	882
	DR	6.69	7.94	5.05	1290
Counterjib with platforms		39.71	9.05	2.02	6803
Counterjib extension with platform		27.26	6.25	1.92	4239
Platform and cabin		12.33	5.41	7.67	1808
Support and hoisting	EL 4860	6.76	8.34	6.56	5666
Jacking cage		26.74	9.21	9.09	7915
Ballast		12.47	1.9	4.92	13230

COUNTERWEIGHTS

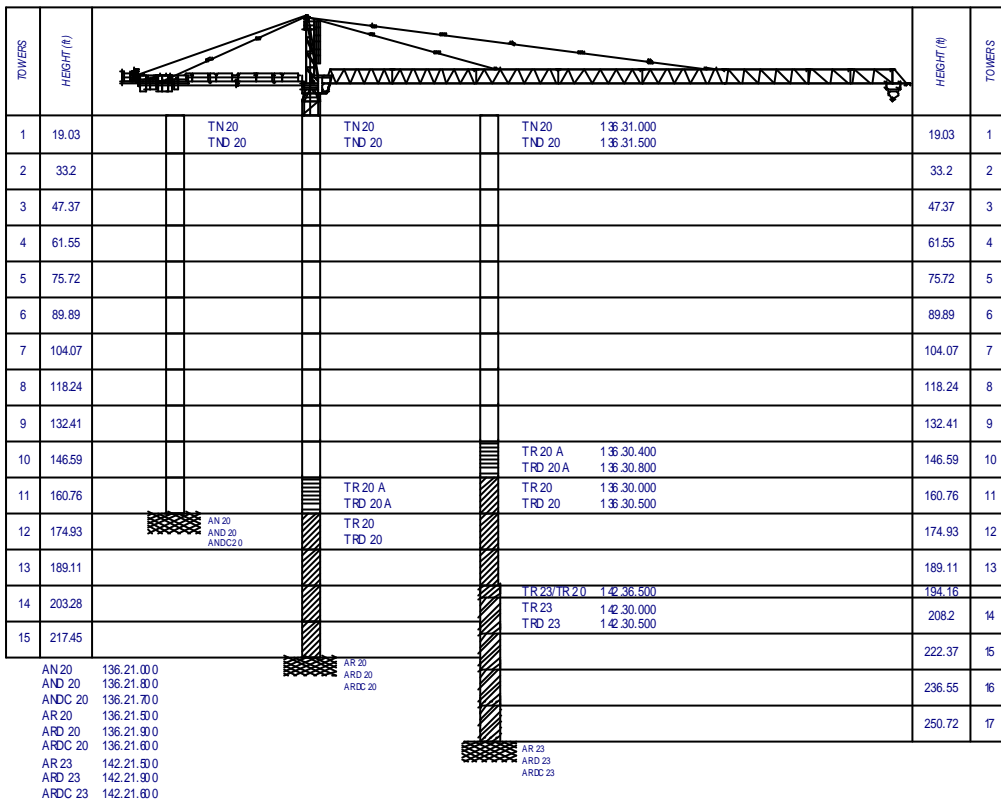
JIB	229.6	213.2	196.8	180.4	164	147.6	131.2	114.8
SR SR / DR								
Total (lb)	49680	47440	41800	40640	35000 38400	25960 29360	20320 25960	38400 53080

*Short counterjib for 114.8 ft reach



JASO EQUIPOS DE OBRAS, S.A.

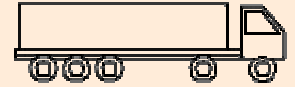
Date: 04-07-01 - Subject to modification, without previous warning



The represented tower configurations are assembly recommendations that can be used in any installation. Each tower section in its indicated position can also be used as the lower element of the mast tower in standard freestanding crane with its corresponding height under hook.
 Tower configurations not shown here, with greater heights under hook or with different tower sections, are also possible but must be checked and confirmed in writing by our technical department in every individual case and before crane installation starts.

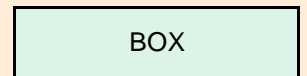
Free standing crane transport with travelling base of 19.7x19.7ft. without base ballast

In trucks



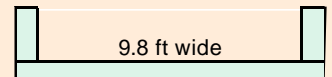
7 units

In containers

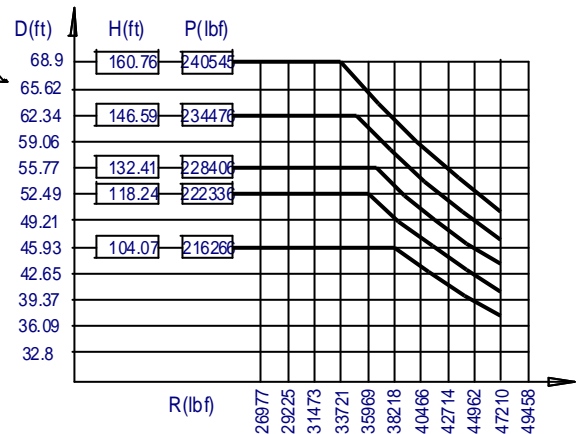
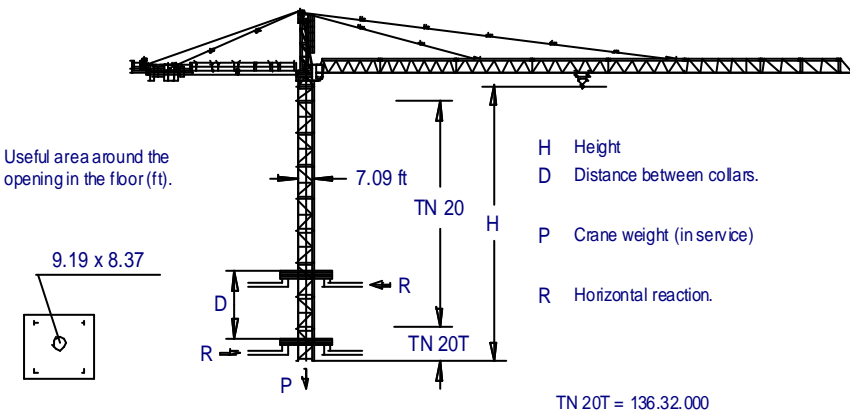


8 units

FLAT RACK



1 unit



JASO EQUIPOS DE OBRAS, S.A.

Ctra./Rd. Madrid - Irún Km. 415
 20.213 IDIAZABAL (Gipuzkoa)
 ESPAÑA / SPAIN
 P.O. Box, 23 - 20.200 BEASAIN

Tel. +34 943 - 18 70 00
 Fax. +34 943 - 18 70 20
 E-mail: jaso@jaso.com
 http://www.jaso.com

Date: 04-07-01

Subject to modification, without previous warning

DELEGATION